

SIMOOM SPACES





SIMOOM

THE SIMOOM RANGE OF MODULAR SEATING PROVIDES AN OPPORTUNITY TO CREATE A VERSATILE WORKSPACE FOR THE MODERN OFFICE.

WITH A VARIETY OF LOW AND HIGH-BACKED OPTIONS TO FORM BOTH OPEN PLAN, COLLABORATIVE AREAS AND INDIVIDUAL PRIVATE SPACES.





SM01
SINGLE SEAT – NO ARMS



SM02
SINGLE CORNER SEAT



SM03
3 SEATER SOFA – NO ARMS



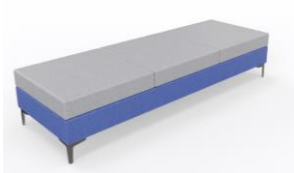
SM04
2 SEATER SOFA



SM05
3 SEATER SOFA



SM06
2 SEATER SOFA – NO ARMS



SM07
3 SEATER SOFA – NO ARMS



SM08
2 SEATER SOFA – NO ARMS WITH HIGH BACK



SM09
SINGLE ARM CHAIR



SM10
2 SEATER SOFA WITH HIGH BACK



SM11
3 SEATER SOFA WITH HIGH BACK



SM12
2 SEATER SOFA – NO ARMS



SM13L
SINGLE CORNER SEAT L/H
WITH HIGH BACK



SM13R
SINGLE CORNER SEAT R/H
WITH HIGH BACK



SM14
SINGLE SEATER – NO ARMS
WITH HIGH BACK



SM15
2 SEATER SOFA WITH LEFT ARM



SM16
2 SEATER SOFA WITH RIGHT ARM



SM17
SINGLE SEAT – NO ARMS



SM20
SINGLE SEATER – NO ARMS
WITH HIGH BACK



SM21
2 SEATER SOFA WITH RIGHT
ARM WITH HIGH BACK



SM22
2 SEATER SOFA WITH LEFT
ARM WITH HIGH BACK



SM24
3 SEATER SOFA – NO ARMS
WITH HIGH BACK



SM27
SINGLE ARM CHAIR WITH
HIGH BACK



SM31
SEMI-CIRCULAR SEAT



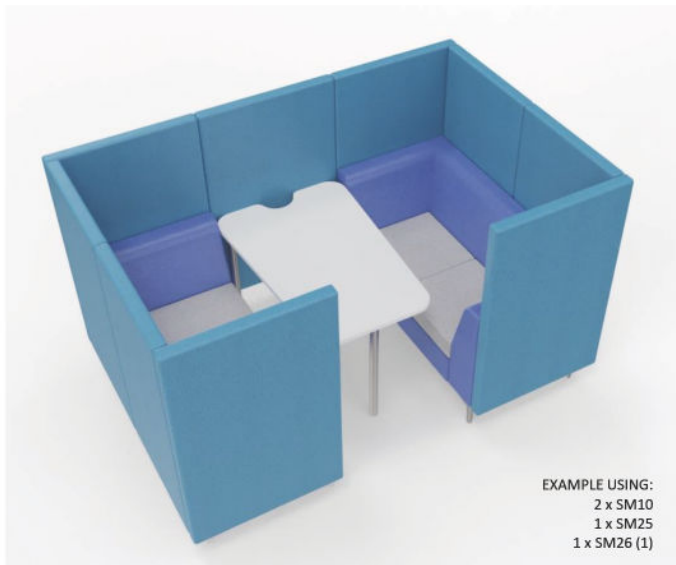
DR4
SQUARE STOOL



DR5
CIRCULAR STOOL



DRH
HEXAGONAL STOOL



EXAMPLE USING:
2 x SM10
1 x SM25
1 x SM26 (1)

SCREENS

BY INCLUDING AN ADJOINING SCREEN AND TABLE YOU CAN
CREATE AN INFORMAL MEETING SPACE FOR 2, 4 OR 6 PEOPLE.
CABLE MANAGEMENT AND POWER POINTS OPTIONS
AVAILABLE.



SM25
800mm ADJOINING SCREEN



SM25(1)
800mm ADJOINING SCREEN
WITH ONE LOWER
PORTHOLE



SM25(2)
800mm ADJOINING SCREEN
WITH TWO PORTHOLES

OPTIONAL EXTRAS
USB & POWER SOCKET
(FITTED TO PLINTH OF SEAT ONLY)



STANDARD PORTHOLES
PLEASE SUFFIX CODE



BLACK - BK SILVER - SL



SM26
750mm LONG TABLE



SM26 (1)
1200mm LONG TABLE



SM26 (2)
1600mm LONG TABLE

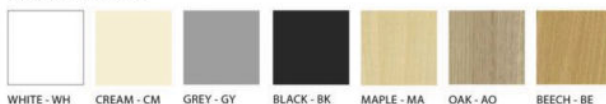


SM32
WORK TABLE



EXAMPLE USING:
1 x SM13L
1 x SM13R
1 x SM25

TABLE FINISHES



WHITE - WH CREAM - CM GREY - GY BLACK - BK MAPLE - MA OAK - AO BEECH - BE

FOR REQUIRED FINISHES, PLEASE SUFFIX CODE. STANDARD SPECIFICATION WILL MATCH
THE EDGE FINISH WITH THE TOP FINISH.
STANDARD LEG COLOURS – WHITE, POLISHED ECO-CHROME OR BLACK. OTHER LEG
COLOURS AVAILABLE ON REQUEST.